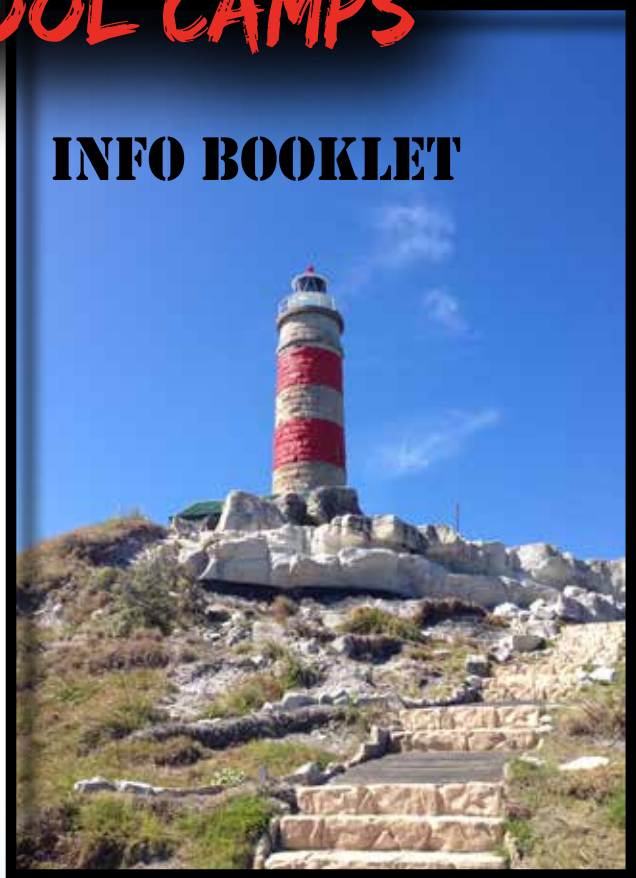


# MORETON ISLAND SCHOOL CAMPS

## INFO BOOKLET



**0409 589 300**



**WWW.MORETONISLAND.NET.AU**  
**INFO@MORETONISLAND.NET.AU**



WELCOME TO MORETON ISLAND WILDERNESS CAMP, A PART OF MORETON ISLAND TOURIST SERVICES, THE ORIGINAL ON MORETON ISLAND. THIS IS THE START OF A MEMORABLE CAMP THAT CAN IMPROVE TEAM WORK, LEADERSHIP, TRUST, COMMUNICATION AND WILL BUILD CHARACTER. THE STUDENTS AND TEACHERS WILL BE TALKING ABOUT THIS CAMP FOR A LONG TIME TO COME.

## WHY US

MORETON ISLAND WILDERNESS CAMP IS AN OWNED AND OPERATED FAMILY BUSINESS. CRAIG WILSON WHO GREW UP ON THE ISLAND IS THE SON OF THE ORIGINAL OWNERS KEITH AND MARILYN WILSON. CRAIG AND HIS WIFE BELINDA HAVE RECENTLY TAKEN OVER, BRINGING A FRESH, FUN AND VIBRANT FEEL TO THE CAMP. THE CAMP WAS STARTED BY THE WILSON FAMILY 29 YEARS AGO TO FILL A VOID IN THE MARKET, TO PROVIDE GROUPS WITH ACCOMMODATION FOR THEIR TRIPS TO MORETON ISLAND. THE NATURAL PROGRESSION WAS EVIDENT WITH THE POPULARITY OF SUCH A MAGNIFICENT NATURE BASED VENUE AND WHEN 98% OF THE ISLAND WAS DEDICATED NATIONAL PARK, THE SERVICES WERE EXTENDED TO PROVIDE A FULLY ACCREDITED CAMP OPERATION AND INCLUDE CATERING AND 4WD TOUR ACTIVITIES FOR OUR GUESTS.



# A TRUE CAMPING EXPERIENCE

WE PROVIDE A VERY DIFFERENT EXPERIENCE THAN OTHER SCHOOL CAMPS WHICH USUALLY HAVE ALL THE SAME ACTIVITIES. OUR UNIQUE LOCATION ON A SAND ISLAND WILDERNESS OFFERS UP NATURE BASED EXPERIENCES THAT CAN'T BE FOUND ANYWHERE ELSE.

OUR CAMPS ARE CONDUCTED IN A NATURAL BUSHLAND SETTING AND PROVIDE STUDENTS WITH AN OPPORTUNITY TO BE IN THE OUTDOORS AND CONNECT WITH NATURE.

WITH KILOMETRES OF UNSPOILT BEACHES ON MORETON ISLAND AND CALM BLUE WATERS JUST STEPS FROM OUR CAMP VENUE, A SCHOOL CAMP ON MORETON ISLAND WITH US CAN'T BE BEATEN AND WILL NEVER BE FORGOTTEN.

SWIM IN THE CALM SEAS OUT FRONT OF THE CAMP OR ONE OF THE MANY FRESH WATER LAKES, GO FISHING, SPOT WHALES FROM THE CAPE IN SEASON, SEE MANTA RAYS, DOLPHINS, TURTLES, MYRIADS OF FISH OR BE LUCKY ENOUGH TO WITNESS BABY TURTLES HATCHING. TOAST MARSHMALLOWS AROUND A REAL CAMPFIRE, PLAY BEACH SPORTS RIGHT OUT THE FRONT OF CAMP, GO BUSH WALKING, EXPLORE WORLD WAR RELICS, SNORKEL AROUND THE ONLY SHIP WRECKS IN MORETON BAY, CLIMB THE HIGHEST COASTAL SAND DUNE IN THE WORLD, SEE QUEENSLAND'S OLDEST LIGHTHOUSE AND EXPERIENCE THE ADVENTURE OF SAND BOARDING, NOT TO MENTION THE AMAZING NUTRITIONAL MEALS AND SNACKS WE PROVIDE.



# INTRODUCING MORETON ISLAND

MORETON ISLAND IS A 37KM LONG SAND ISLAND COVERING 19 000 HECTARES AND SITS JUST 35KMS OFF BRISBANE. IT IS 98% NATIONAL PARK WHICH PROTECTS ITS ABUNDANT VEGETATION, WILDLIFE, FRESHWATER LAKES AND STREAMS, AND ITS MAGNIFICENT COASTAL SAND DUNES.

THE ISLAND REMAINS ONE OF THE FEW UNTOUCHED AREAS OF NATURAL WILDERNESS, HAVING NO SEALED ROADS AND VERY FEW PERMANENT RESIDENTS. IT SUPPORTS AN AMAZING VARIETY OF VEGETATION IN ITS SANDY ENVIRONMENT. WITH OUR CAMP STEPS AWAY FROM PURE WHITE SILICA SANDY BEACHES, AND CRYSTAL CLEAR BLUE WATERS, ROCKY HEADLANDS, PRISTINE NATIVE FORESTS AND REFRESHING FRESHWATER LAKES AND STREAMS MAKE MORETON ISLAND A MUCH SOUGHT AFTER DESTINATION WITH CAMPERS, BUSHWALKERS, FISHERMEN AND NATURALISTS.

ANCIENT SHELL MIDDENS, MORE THAN 1600 YEARS OLD, ARE A REMINDER THAT ABORIGINAL PEOPLES, NAMELY THE NGUGI TRIBE, INHABITED THE ISLAND MANY YEARS BEFORE EUROPEANS. IN 1848, A PILOT STATION WAS ESTABLISHED AT BULWER TO AID NAVIGATION OF SHIPPING ENTERING MORETON BAY AROUND CAPE MORETON. THE CAPE MORETON LIGHTHOUSE IS THE OLDEST LIGHTHOUSE IN QUEENSLAND, IT WAS BUILT IN 1857 AND STILL OPERATES TODAY. THE CLIFF IT SITS ON PROVIDES SOME OF THE ISLAND'S MOST SPECTACULAR COASTAL SCENIC VIEWS AND A GREAT WILDLIFE VIEWING PLATFORM. IT IS ALSO ONE OF ONLY A HANDFUL OF PLACES WHERE YOU CAN WATCH THE WHALES ANNUAL BREEDING MIGRATION FROM LAND FROM MAY TO OCTOBER.

THE REMAINS OF OLD MILITARY EMPLACEMENTS AND FORTIFICATIONS CAN BE FOUND AT COWAN COWAN AND ROUS BATTERY, REMINDERS OF BRISBANE'S EFFORTS TO DEFEND ITSELF DURING WORLD WAR II. TANGALOOMA RESORT STILL RETAINS ONE OF THE OLD STRUCTURES KNOWN AS THE FLENSING DECK WHICH WAS USED DURING ITS DAYS AS QUEENSLAND'S ONLY WHALING STATION, OPERATING FROM 1953 TO 1963.



TODAY, IT IS FAMOUS FOR ITS DOLPHIN FEEDING AND MARINE EDUCATION PROGRAMS. A GRAVEYARD OF OLD DREDGES AND WORKBOATS SUNK OFF THE BEACH KNOWN AS TANGALOOMA WRECKS FORM A BREAKWATER FOR SAFE BOAT HARBOURING. OLD SHIPWRECKS CAN ALSO BE FOUND ON THE BEACH IN FRONT OF BULWER. THESE RUSTING OLD HULKS HARBOUR A TREMENDOUS VARIETY OF MARINE LIFE AND PROVIDE AN IDEAL, SAFE VENUE FOR SNORKELLING AND SCUBA DIVING.

MOUNT TEMPEST, A VEGETATED SANDHILL NEAR THE CENTRE OF THE ISLAND, MAKES A CHALLENGING CLIMB FOR THOSE WALKERS KEEN ON THE BEST VIEWS OF MORETON AND THE BAY. MOUNT TEMPEST IS REPUTEDLY THE HIGHEST SANDHILL IN THE SOUTHERN HEMISPHERE, STANDING SOME 285 METRES ABOVE SEA LEVEL. NATIONAL PARKS HAVE CONSTRUCTED A VIEWING PLATFORM AT THE CREST, WITH HELP FROM THE ARMY AND THEIR HELICOPTER, TO GAIN THE BEST POSSIBLE VIEWS OF THE ISLAND AND ITS SURROUNDS. THE VIEW IS SPECTACULAR ON A CLEAR DAY.

THE BIG AND LITTLE SANDHILLS, NEAR THE SOUTHERN TIP OF THE ISLAND, PROVIDE AN AWE INSPIRING SIGHT OF PURE SILICA SAND BLOWN INTO DUNES RUNNING ACROSS THE ISLAND FROM EAST TO WEST, SOME 2.5KMS. THE DESERT IS A MAJOR SAND DUNE BLOWOUT, JUST SOUTH OF TANGALOOMA RESORT AND ACCESSIBLE VIA A SCENIC WALKING TRACK AND 4WD TRACK FROM THE WESTERN BEACH. THESE AREAS OF DEVEGETATED SAND DUNES PROVIDE THE SLOPES FOR AN EXHILARATING SAND TOBOGGAN RIDE.



WETLAND AREAS AT HEATH ISLAND, IN THE NORTH, AND THE MIRRAPOOLS AND DAY'S GUTTER IN THE SOUTH, PROVIDE INTERESTING AND UNIQUE HABITATS FOR A VARIETY OF MIGRATORY WADING BIRDS AND NEWLY ESTABLISHING MANGROVE ECO SYSTEM. SEA BIRDS ABOUND ALONG THE MOSTLY UNINHABITED FORESHORES. OSPREY, SEA EAGLES, KESTRELS AND KITES CAN BE SEEN SOARING HIGH ABOVE THE BEACHES AND A MYRIAD OF COLOURFUL HONEYEATERS THRIVE AMONGST THE WILDFLOWERS OF THE NATIVE FOREST. THERE ARE OVER 180 DIFFERENT SPECIES OF BIRDS THAT HAVE BEEN SIGHTED ON MORETON ISLAND.

THE SEAS AROUND THE ISLAND TEEM WITH MARINE LIFE. TURTLES, DUGONGS, DOLPHINS, SCHOOLS OF FISH, STINGRAYS AND THE MAGNIFICENT HUMPBAC WHALE, MAY BE SIGHTED.

# OUR CAMPSITE

OUR CAMP IS BOOKED FOR THE EXCLUSIVE USE OF ONE GROUP AT A TIME. IT IS SITUATED AT COMBOYURO POINT ON THE NORTH WEST TIP OF MORETON ISLAND, 1KM NORTH OF THE SMALL VILLAGE OF BULWER. COMBOYURO POINT CAMPGROUNDS IS A NATIONAL PARK FACILITY PROVIDING PROTECTED AND SHADY SITES WITH SHOWERS AND A TOILET BLOCK, LOCATED ADJACENT TO OUR CAMP AREA.

ENJOY THE BEACH DIRECTLY IN FRONT OF OUR CAMP SITE AND IMMERSE YOURSELF IN THE CALM, CRYSTAL CLEAR BLUE WATERS AND TAKE ADVANTAGE OF THE SAFE SWIMMING, FANTASTIC FISHING AND A WIDE FORESHORE TO PLAY AN ARRAY OF BEACH SPORTS.

WE PROVIDE OUTDOOR EDUCATION AND RECREATIONAL ADVENTURE CAMPS IN ONE OF QUEENSLAND'S MOST UNTOUCHED NATIONAL PARKS. OUR CAMPS ARE CONDUCTED IN A NATURAL BUSHLAND SETTING AND PROVIDE STUDENTS WITH AN OPPORTUNITY TO BE IN THE OUTDOORS AND CONNECT WITH NATURE.

OUR VENUE IS SET UP FOR PRIMARY, SECONDARY AND TERTIARY SCHOOL GROUPS, ACCOMMODATING PEOPLE FROM 10 UP TO 200 FOR 3, 4 OR 5 DAY CAMPS, WE CAN ALSO DO WEEKEND CAMPS, OVERNIGHT CAMPS AND DAY TRIPS. ACCOMMODATION WILL BE IN 1 OF 30 CABIN STYLE TENTS, GROUPED UNDER LARGE SHADE COVERS AMONGST THE SHADY TREES, WHICH PROTECT YOU FROM THE ELEMENTS. EACH TENTS FITS FROM 2-6 BEDS GIVING ROOM FOR EACH CAMPER TO HAVE A COMFY STRETCHER BED (BRING YOUR OWN BEDDING EX. PILLOWS, SLEEPING BAGS, BLANKETS OR SHEETS). TEACHERS AND SUPERVISORS ARE PROVIDED WITH THEIR OWN TENT AND MATTRESS BED FOR THEIR INDIVIDUAL PRIVACY.

LIGHTING IS DISTRIBUTED TO TENTS AND THE CAMP SURROUNDS AT NIGHT BY A 240V. GENERATOR WHICH CAN ALSO CHARGE SUPERVISOR PHONES AND CAN BE USED FOR A/V EQUIPMENT. A 12V. SYSTEM GIVES MAIN AREA LIGHTING 24HRS.

MEALS ARE ENJOYED IN OUR LARGE COVERED DINING AREA WHICH IS SETUP NEXT TO THE TENTS AND PROVIDES AN UNDECOVER RECREATIONAL AREA IN WET WEATHER. THE CAMP IS ALSO SECLUDED FROM OTHER CAMPERS. WE CATER YOUR GROUP FROM OUR FULLY EQUIPPED MOBILE KITCHEN.

FOOD IS SERVED BUFFET STYLE, FROM OUR BAIN-MARIES, AND ALL CAMPERS ARE GUARANTEED TO BE WELL FED. TEA/COFFEE FACILITIES ARE SUPPLIED FOR SUPERVISORS AND FRUIT IS ALWAYS AVAILABLE.





YOU CAN CHOOSE TO SELF CATER AND HAVE ACCESS TO OUR MOBILE KITCHEN, EQUIPPED WITH A LARGE LPG BBQ AND SEPARATE BURNERS FOR POTS AND SAUCEPANS. EXTRA BBQS ARE AVAILABLE FOR LARGER GROUPS. GAS IS SUPPLIED. A LARGE COOLER BOX IS BUILT IN TO THE KITCHEN FOR ANY PERISHABLES – BYO ICE, OR ITS AVAILABLE AT BULWER SHOP 500M AWAY. THE KITCHEN IS FULLY EQUIPPED WITH ALL THE NECESSARY POTS AND PANS AND COOKING UTENSILS.

ALL CAMPERS MUST BRING THEIR OWN PLATES, CUPS, CUTLERY AND TEA TOWELS.

THE CAMP HAS ITS OWN LPG HOT WATER SYSTEM FOR USE IN THE KITCHEN AND WASH UP AREA. COLD WATER SHOWERS ARE PROVIDED IN THE NATIONAL PARK AMENITIES BLOCK, WHICH IS PLEASANT IN THE WARMER MONTHS, HOWEVER, WE PROVIDE HOT WATER BUSH SHOWER BAGS FOR THOSE COOLER NIGHTS.

THE CAMP OPERATES UNDER A COMMERCIAL OPERATOR'S PERMIT ISSUED BY THE ENVIRONMENTAL PROTECTION AGENCY AND COVERS ALL RELEVANT CAMP FEES, CONSENTS AND PUBLIC LIABILITY INSURANCES. ALL WORKPLACE HEALTH & SAFETY CRITERIA ARE EMBRACED ON ALL ACTIVITIES AT CAMP. COPIES OF HEALTH & SAFETY RISK ASSESSMENT CRITERIA AS PUBLISHED BY THE QUEENSLAND DEPARTMENT OF EDUCATION RELATING TO – CAMPING/FISHING/BAIT GATHERING/ SNORKELING/ SWIMMING/BUSHWALKING AND SAND TOBOGGANING ARE AVAILABLE TO DOWNLOAD ON OUR WEBSITE FOR YOUR USE.



# TRANSPORT

YOUR TRIP TO MORETON ISLAND STARTS WITH A SMOOTH 90MIN BAY CROSSING ON BOARD THE MODERN PASSENGER AND VEHICLE FERRY MiCAT WHICH OPERATES FROM LYTTON ON THE SOUTH SIDE OF THE BRISBANE RIVER.

MiCAT DEPARTS FROM 14 HOWARD SMITH DRIVE, PORT OF BRISBANE.

TRANSPORT FOR YOUR TOURS AND TRANSFERS AROUND THE ISLAND ARE IN OUR COMFORTABLE 4WD VEHICLES, APPROVED BY THE QUEENSLAND DEPARTMENT OF TRANSPORT AND PERMITTED AND INSURED TO OPERATE UNDER A CURRENT DEPARTMENT OF ENVIRONMENT COMMERCIAL OPERATOR'S PERMIT AND OPERATOR ACCREDITATIONS. ALL DRIVERS ARE AUTHORISED TO OPERATE UNDER THE APPROPRIATE CATEGORIES OF PASSENGER TRANSPORT REGULATIONS AND ALL STAFF HOLD A CURRENT BLUE CARD ACCREDITATION AS ISSUED BY THE DEPARTMENT OF CHILDREN'S SERVICES.





# SAMPLE OF CAMP ITINERARY

## 3 DAY CAMP

### DAY 1

- 8.30AM – DEPART PORT OF BRISBANE ON MICAT FERRY
- 10.00AM – ARRIVE AT TANGALOOMA WRECKS. 4WD TRANSFERS TO CAMPSITE AT COMBOYURO POINT. CAMP BRIEFING, TENT ALLOCATION.
- 12.30PM – LUNCH
- 1.30PM – TEACHER FACILITATED BEACH ACTIVITIES – SWIM, FISH, GAMES, SNORKEL, SPORTS
- 4.30PM – SHOWERS
- 6.00PM – DINNER
- 7.30PM – NIGHT BEACH WALK/ STARGAZING



### DAY 2

- 6.30AM – RISE AND SHINE! ACTIVITIES SUCH AS SWIM, WALK OR JOG
- 7.15AM – BREAKFAST
- 8.30AM – HALF GROUP ON 4WD NORTHERN SAFARI TOUR WITH FRESH WATER LAKE SWIM  
– HALF GROUP TEACHER FACILITATED ACTIVITY BUSH DISCOVERY WALK, EXPLORE BULWER WRECKS AND WWII BUNKERS, SAND ART FISHING.
- 12.00PM – LUNCH.
- 1.00PM – HALF GROUP ON 4WD TOUR, HALF TEACHER FACILITATED ACTIVITY
- 4.30PM – SHOWERS
- 6.00PM – DINNER
- 7.30PM – CAMP FIRE WITH MARSHMALLOWS ROASTING (BYO)

### DAY 3

- 6.30AM – RISE AND SHINE! START PACKING AND CLEAN TENTS
- 7.15AM – BREAKFAST
- 8.00AM – FINISH PACKING AND SWEEP TENTS, LOAD LUGGAGE TRAILER READY FOR CAMP DEPARTURE
- 8.30AM – ALL GROUP 4WD TO DESERT FOR SAND BOARDING WITH WALK VIA COWAN COWAN AND THROUGH TANGALOOMA RESORT
- 1.30PM – PICNIC LUNCH ON BEACH AT TANGALOOMA WRECKS
- 2.30PM – SWIM IN FRONT OF WRECKS
- 3.30PM – MICAT FERRY DEPARTS FOR RETURN TO BRISBANE – ARRIVE 5PM.

# SAMPLE OF CAMP ITINERARY

## 4 DAY CAMP

### DAY 1

- 8.30AM – DEPART PORT OF BRISBANE ON MiCAT FERRY
- 10.00AM – ARRIVE AT TANGALOOMA WRECKS. 4WD TRANSFERS TO CAMPSITE AT COMBOYURO POINT. CAMP BRIEFING, TENT ALLOCATION ETC.
- 12.30PM – LUNCH
- 1.30PM – TEACHER FACILITATED BEACH ACTIVITIES – SWIM, FISH, GAMES, SNORKEL, SPORTS
- 4.30PM – SHOWERS
- 6.00PM – DINNER
- 7.30PM – NIGHT BEACH WALK/STARGAZING

### DAY 2

- 6.30AM – RISE AND SHINE! ACTIVITIES SUCH AS SWIM, WALK OR JOG
- 7.15AM – BREAKFAST
- 8.30AM – HALF GROUP ON 4WD NORTHERN SAFARI TOUR WITH FRESH WATER LAKE SWIM
- HALF GROUP TEACHER FACILITATED ACTIVITY BUSH DISCOVERY WALK, BEACH HIKE, SAND ART/MODELLING, FISHING.
- 12.00PM – LUNCH
- 1.00PM – HALF GROUP ON 4WD TOUR, HALF TEACHER FACILITATED ACTIVITY
- 4.30PM – SHOWERS
- 6.00PM – DINNER
- 7.30PM – CAMP FIRE WITH MARSHMALLOWS ROASTING(BYO)

### DAY 3

- 6.30AM – RISE AND SHINE! ACTIVITIES SUCH AS SWIM, WALK OR JOG.
- 7.15AM – BREAKFAST
- 8.30AM – ALL GROUPS 4WD TO TIDAL FLATS AT HEATH ISLAND.
- 1.30PM – LUNCH
- 2.30PM – SWIM, BEACH GAMES (TEACHER FACILITATED)
- 4.30PM – SHOWERS
- 6.00PM – DINNER
- 7.30PM – CONCERT , CELEBRITY HEADS

### DAY 4

- 6.30AM – RISE AND SHINE! START PACKING AND CLEAN TENTS
- 7.15AM – BREAKFAST
- 8.00AM – FINISH PACKING AND SWEEP TENTS, LOAD LUGGAGE TRAILER READY FOR CAMP DEPARTURE
- 8.30AM – ALL GROUP 4WD TO DESERT FOR SAND BOARDING WITH WALK VIA COWAN COWAN AND THROUGH TANGALOOMA RESORT
- 1.00PM – PICNIC LUNCH ON BEACH AT TANGALOOMA WRECKS
- 2.00PM – SWIM IN FRONT OF WRECKS
- 3.30PM – MiCAT FERRY DEPARTS FOR RETURN TO BRISBANE – ARRIVE 5PM.



# SAMPLE OF CAMP ITINERARY

## 5 DAY CAMP

### DAY 1

- 8.30AM – DEPART PORT OF BRISBANE ON MICAT FERRY
- 10.00AM – ARRIVE AT TANGALOOMA WRECKS. 4WD TRANSFERS TO CAMPSITE AT COMBOYURO POINT. CAMP BRIEFING, ALLOCATE TENTS ETC.
- 12.30PM – LUNCH
- 1.30PM – TEACHER FACILITATED BEACH ACTIVITIES – SWIM, FISH, GAMES
- 4.30PM – SHOWERS
- 6.00PM – DINNER
- 7.30PM – NIGHT BEACH WALK/STARGAZING

### DAY 2

- 6.30AM – RISE AND SHINE! ACTIVITIES SUCH AS SWIM, WALK OR JOG
- 7.15AM – BREAKFAST
- 8.30AM – HALF GROUP ON 4WD NORTHERN SAFARI TOUR WITH FRESH WATER LAKE SWIM  
– HALF GROUP TEACHER FACILITATED ACTIVITY BUSH DISCOVERY WALK, FISHING ETC.
- 12.00PM – LUNCH
- 1.00PM – HALF GROUP ON 4WD TOUR, HALF TEACHER FACILITATED ACTIVITY
- 4.30PM – SHOWERS
- 6.00PM – DINNER
- 7.30PM – CAMP FIRE WITH MARSHMALLOW ROASTING (BYO)

### DAY 3

- 6.30AM – RISE AND SHINE! ACTIVITIES SUCH AS SWIM, WALK OR JOG.
- 7.15AM – BREAKFAST
- 8.30AM – ALL GROUP 4WD TO DESERT FOR SAND BOARDING WITH WALK VIA COWAN COWAN AND THROUGH TANGALOOMA RESORT
- 1.30PM – LUNCH
- 2.30PM – BEACH ACTIVITIES – BEACH SPORTS, SWIM, FISH.(TEACHER FACILITATED)
- 4.30PM – SHOWERS
- 6.00PM – DINNER
- 7.30PM – MINI OLYMPICS, GAMES

### DAY 4

- 6.30AM – RISE AND SHINE! ACTIVITIES SUCH AS SWIM, WALK OR JOG
- 7.15AM – BREAKFAST
- 8.30AM – ALL GROUP 4WD AND WALK TO TIDAL FLATS AT HEATH ISLAND.
- 1.30PM – LUNCH
- 2.30PM – BEACH ACTIVITIES – SWIM, SPORTS (TEACHER FACILITATED)
- 4.30PM – SHOWERS
- 6.00PM – DINNER
- 7.30PM – CONCERT, CELEBRITY HEADS

### DAY 5

- 6.30AM – RISE AND SHINE! START PACKING AND CLEAN TENTS
- 7.15AM – BREAKFAST
- 8.00AM – FINISH PACKING AND SWEEP TENTS, LOAD LUGGAGE TRAILER READY FOR CAMP DEPARTURE
- 9.00AM – 4WD TRANSFERS TO THE WRECKS
- 10.30AM – MICAT FERRY DEPARTS FOR RETURN TO BRISBANE – ARRIVE 12.00PM



# 4WD EXCURSIONS

## NORTHERN SAFARI TOUR

LEAVING CAMP AND THE BAY SIDE OF THE ISLAND, WE PASS THROUGH THE TOWNSHIP OF BULWER AND ON TO EXPLORE NORTH POINT. WITH ITS ROCKY POOLS APTLY NAMED THE CHAMPAGNE POOLS IT IS A FAVOURITE SPOT WITH THE LOCALS. WE THEN HEAD TO THE OLDEST Lighthouse IN QUEENSLAND AT CAPE MORETON WHERE WE CAN SEE WHALES IN SEASON AND MARINE LIFE LIKE DOLPHINS, TURTLES AND RAYS, BEFORE EXPLORING THE ONSITE VISITOR CENTRE TO LEARN HISTORICAL FACTS ABOUT THE ISLAND. WE WILL THEN JOURNEY ALONG THE EASTERN BEACH AND STOP AT BLUE LAGOON FOR A FRESHWATER SWIM BEFORE HEADING THROUGH THE BUSHLAND 4WD TRACKS BACK TO CAMP.

## SAND TOBOGGANING

THE WINDS HAVE FORMED A WAVE LIKE DUNE LYING ACROSS THE LENGTH OF THE DESERT, A MASSIVE SAND BLOW ONLY RIMMED BY VEGETATION, BEHIND TANGALOOMA. BESIDES ITS COLOURED SANDS THAT CAN BE SEEN UNDERNEATH, THE DESERT IS VERY POPULAR FOR AN EXHILARATING SAND TOBOGGAN RIDE DOWN ITS STEEP SLOPES. WE SPLIT THE GROUPS INTO 2 FOR TRANSPORT PURPOSES AND REGROUP AT THE DESERT. A SAFETY DEMONSTRATION IS THEN GIVEN AND UNDER STRICT SUPERVISION AND WITH DUE CARE FOR ANY SMALL PLANT STRUGGLING TO SURVIVE, WE WILL ACHIEVE GREAT SPEED ON THE UNDISTURBED SAND SLOPES FROM TOP TO BOTTOM. THE ADVENTURE ALSO PROVES TO BE A GREAT CONFIDENCE BOOSTER AND CHARACTER BUILDER AMONGST THOSE WHO MAY BE A LITTLE TIMID.

## TIDAL FLATS TOUR

WE 4WD TO MAIN CREEK, WHERE THERE ARE TIDAL LAGOON FLATS SOME 6KILMS FROM CAMP. THIS ECOSYSTEM IS FILLED WITH MANGROVES, WETLANDS, AND SAND DUNES WHERE STUDENTS CAN EXAMINE THE MARINE LIFE THAT BREED IN THE SHALLOWS LIKE SOLDIER CRABS, YABBIES, AND FISH. EXPLORE THE FLOWING CREEK THAT DRAINS AND FILLS THE TIDAL LAGOON EVERYDAY, BUILD DAMS IN THE TIDAL POOLS TO STUDY EROSION AND HOW THE SAND MOVES. RACE TO THE TOP OF AUSTRALIA HILL AND BE CROWNED KING OR QUEEN OF THE DUNE, THEN VIEW THE BIRDLIFE THAT ROOST IN THE AREA. STUDY THE NEWLY ESTABLISHING MANGROVES OR THE PROMINENT EROSION.



# ALTERNATE EXCURSIONS

THERE ARE A NUMBER OF EXCURSIONS AND ACTIVITIES THAT CAN BE SUBSTITUTED FOR THE SUGGESTED TRIPS AS PER ITINERARY, OR AS AN ADDED EXTRA. THESE CAN BE TAILORED TO SUIT YOUR SCHOOL'S REQUIREMENTS. (EXTRA COSTS MAY BE INVOLVED).

## CLIMB MOUNT TEMPEST

4WD THROUGH EUCALYPTUS FOREST TO THE HIGHEST COASTAL SANDHILL IN THE SOUTHERN HEMISPHERE FOR A MODERATE HIKE TO THE TOP TO ENJOY THE MAGNIFICENT 360 DEGREES OF MORETON BAY AND THE ISLAND.

## EXPLORE THE BIG SANDHILLS

MASSIVE DUNES OF OCEANIC MINERAL SANDS COVERING ANCIENT BURIED FORESTS AT THE BOTTOM END OF MORETON ISLAND.

## MARINE STUDIES

EXCURSIONS TO AREAS WHERE EXTENSIVE STUDIES OF MARINE LIFE CAN BE EXPLORED SUCH AS ROCKY HEADLANDS AND FORESHORES, COASTAL DUNES, FRESHWATER LAKE SYSTEMS AND TIDAL MANGROVE FLATS OR WRECKS SNORKELLING.

## SNORKELLING AT TANGALOOMA WRECKS

ESCORTED SNORKELLING TOURS AND INSTRUCTION BY QUALIFIED INSTRUCTORS. CONDUCTED BY A THIRD PARTY OPERATOR AT THE WRECKS INCLUDING ALL EQUIPMENT AND FLOATATION WETSUIT.

APPROX. COST INCLUDING 4WD TRANSFERS \$55 P.P. DEPENDING ON GROUP SIZE

## SCUBA DIVE

INTRODUCTORY COURSES AT WRECKS – AGE LIMITS APPLY.

HAVE OTHER ACTIVITIES IN MIND? WE CAN ORGANISE AN ACTIVITY TO SUIT YOUR REQUIREMENTS.



# IDEAS FOR CAMP ACTIVITIES

THE CAMP OPERATORS ARE IN CHARGE OF ACCOMMODATION AND EQUIPMENT, THE CATERING , 4WD TRANSPORT AND TOURS (WHERE TRANSPORT IS INVOLVED) ON THE ISLAND. SUPERVISION OF THE CAMPERS IS PRIMARILY THE RESPONSIBILITY OF THE TEACHERS/SUPERVISORS, WITH GUIDANCE AND ASSISTANCE FROM THE OPERATORS (IF REQUIRED).

AS DETAILED IN THE SAMPLE ITINERARY, THERE ARE PERIODS AT CAMP WHERE THE CAMPERS REQUIRE TEACHER FACILITATED ACTIVITIES. THESE PERIODS ARE THE RESPONSIBILITY OF THE TEACHERS/SUPERVISORS.

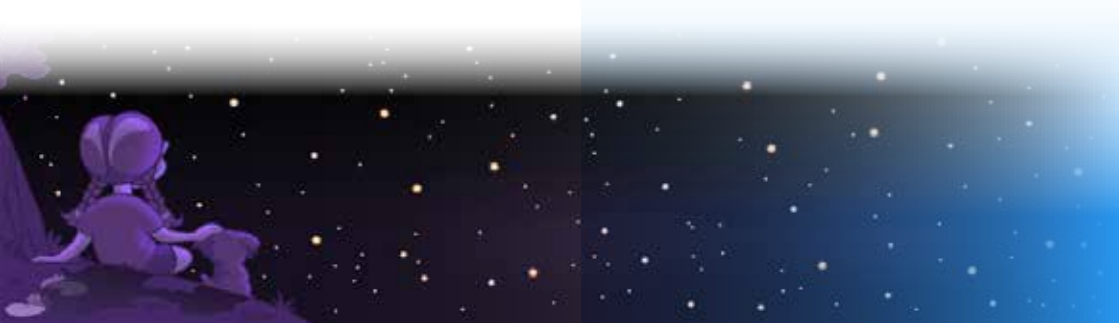
BELOW ARE A FEW SUGGESTIONS ON THINGS TO DO IN THIS TIME:

## **DAYTIME ACTIVITIES**

- ◇ BUSHWALKS TO VARIOUS SUGGESTED LOCATIONS NEAR THE CAMPGROUNDS, THESE WALKS COULD BE THEMED AROUND THE ENVIRONMENTAL BOTANICAL OR HISTORICAL POINTS OF INTEREST , LIKE EXPLORING THE BULWER WRECKS AND THE WWII BUNKERS
- ◇ BEACH ACTIVITIES AND SPORTS
- ◇ SWIMMING & SNORKELLING AROUND THE SHALLOW BULWER WRECKS (BRING YOUR OWN)
- ◇ FISHING, BAIT NETTING (NETS PROVIDED)
- ◇ TOUCH FOOTY, CRICKET, BASEBALL
- ◇ SAND MODELLING & SAND ART.
- ◇ CAMP ACTIVITIES FOR THOSE PERIODS WHILST WAITING FOR SHOWERS, MEALS ETC. FRISBEES, FRENCH CRICKET, BOCCIE, BALL GAMES. BOARD AND CARD GAMES, STORY TELLING, GROUP PARTICIPATION MIND GAMES, GATHERING STICKS FOR MARSHMALLOW ROASTING

## **NIGHTTIME ACTIVITIES**

- ◇ BEACH WALKS
- ◇ BEACH STAR WATCH AND PLANET SEARCH,
- ◇ SPOTLIGHT,
- ◇ CONCERT OR TALENT QUEST OR CELEBRITY HEADS,
- ◇ CAMPFIRE WITH MARSHMALLOW ROAST,
- ◇ TELEVISION AND DVD PLAYER OR CD PLAYER CAN BE MADE AVAILABLE.





# SAMPLE MENU

## BREAKFAST

FRESH FRUIT, A RANGE OF CEREALS, AND JUICE ARE SERVED EVERY MORNING ALONG WITH A DIFFERENT DAILY VARIETY OF HOT FOODS RANGING FROM:

BACON, BREAKFAST SAUSAGES, SAVOURY MINCE, SCRAMBLED EGGS, COUNTRY STYLE HASH, SPAGHETTI/BAKED BEANS, TOAST/FRENCH TOAST AND PANCAKES.

## LUNCH

FRUIT AND FRUIT JUICE CORDIAL IS SERVED WITH EVERY LUNCH ALONG WITH A VARIETY OF:

MEAT AND SALAD FRESH SALAD ROLLS, GOURMET HOT DOGS, SALAD, HAMBURGERS.

## DINNER

FRUIT JUICE CORDIAL IS SERVED EVERY NIGHT ALONG WITH A DIFFERENT NIGHTLY VARIETY OF:

HONEY/SOY CHICKEN, VEGETABLE STIR FRY/NOODLES, BBQ RISSOLES, SPAGHETTI BOLOGNESE, LAMB CHOPS, PORK CHOPS, SAUSAGES, GRAVY, POTATO BAKE, MACARONI AND CHEESE, HONEY CARROTS, PEAS, CORN, MIXED VEGETABLES, GARDEN SALAD, FRESH DINNER ROLLS/GARLIC BREAD.

## DESSERT

A DIFFERENT NIGHTLY ARRAY OF CHOCOLATE MOUSSE, BANANA AND CUSTARD, JELLY, FRUIT SALAD AND ICE-REAM.



MORNING AND AFTERNOON TEA IS ALSO PROVIDED BETWEEN MEALS. A TEA/COFFEE MAKING FACILITY IS AVAILABLE TO SUPERVISORS (AND STUDENTS IF REQUESTED PRIOR)

# PRICES

UP TO AND INCLUDING YEAR 12

	FULLY CATERED	SELF CATERED
3 DAY CAMP	\$215 p.p.	\$165 p.p.
4 DAY CAMP	\$285 p.p.	\$210 p.p.
5 DAY CAMP	\$330 p.p.	\$250 p.p.

WE ALLOW ONE SUPERVISOR PER 10 STUDENTS FREE OF CHARGE. ADDITIONAL  
SUPERVISORS WILL BE CHARGED THE SAME RATE AS STUDENTS  
PRICE IS ALL INCLUSIVE AND INCLUDES RETURN FERRY AND 4WD EXCURSIONS  
HIGHER RATES MAY APPLY TO WEEKENDS – PRICES SUBJECT TO CHANGE  
GST INCLUDED



**WWW.MORETONISLAND.NET.AU**  
**INFO@MORETONISLAND.NET.AU**

**0409 589 300**